

Christ
Centred

Outward
Focused

PCC SECRETARIES' CONFERENCE 2024

Christ
Centred

Outward
Focused

Please send any queries to
governance@southwark.anglican.org

Christ
Centred

Outward
Focused

WELCOME AND INTRODUCTION FROM THE DIOCESAN SECRETARY

Introduction from the Diocesan Secretary

- We're here to support you!
- What can we do for you?
- Who is here today?
- Above all, thank you for coming and for all that you do!



PCC Secretaries' Handbook

- A new printed handbook for every PCC to complement the Church Representation Rules
- Version on the website
- Borrowed by other dioceses already
- Vast array of appendices covering many aspects of the PCC's role



Christ
Centred

Outward
Focused

SOUTHWARK VISION AND LOOKING FORWARD

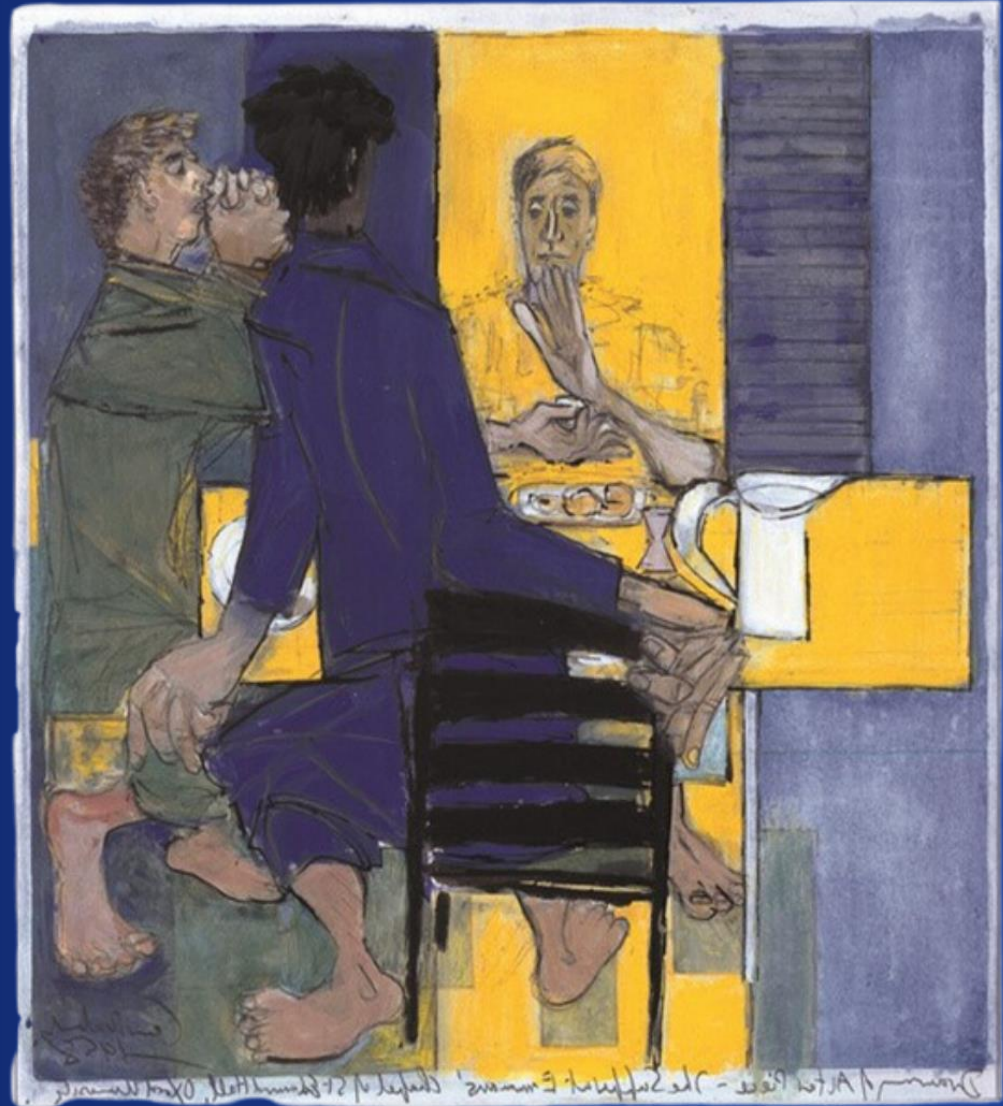


Christ
Centred

Outward
Focused

Christ Centred

Outward Focused



Christ
Centred

Outward
Focused

Roadmap & consultation

- Christ Centred | Outward Focused
- Theologically underpinned
- Reflects our values as a Diocese
- Feedback reflected in the current Vision
- Approved by Diocesan Synod in November 2023

Christ
Centred

Outward
Focused

Our Priorities



Parishes



Ministry



Growth



Youth & Diversity



Deepening our discipleship



Healing

Christ
Centred
Outward
Focused

Our Shared Values

Christ Centred

Delighting in God's
presence among us,
seeking excellence in
worship and all we do

Striving for the dignity of
all, creating just
communities

Trusting in the Holy Spirit,
seeking God's guidance
through prayer and
scripture

Loving one another,
committed to speaking
well of each other

Praying for and generously
supporting one another

Listening, offering places
of stability, learning
and discipleship

Offering safe and
welcoming spaces

Outward Focused

Delighting in God's
presence in our world,
seeking innovation in
worship and mission

Naming and resisting evil,
heralding God's kingdom

Proclaiming our faith and
being willing to take risks

Loving others, engaging
with our communities,
partners and those of
other faiths

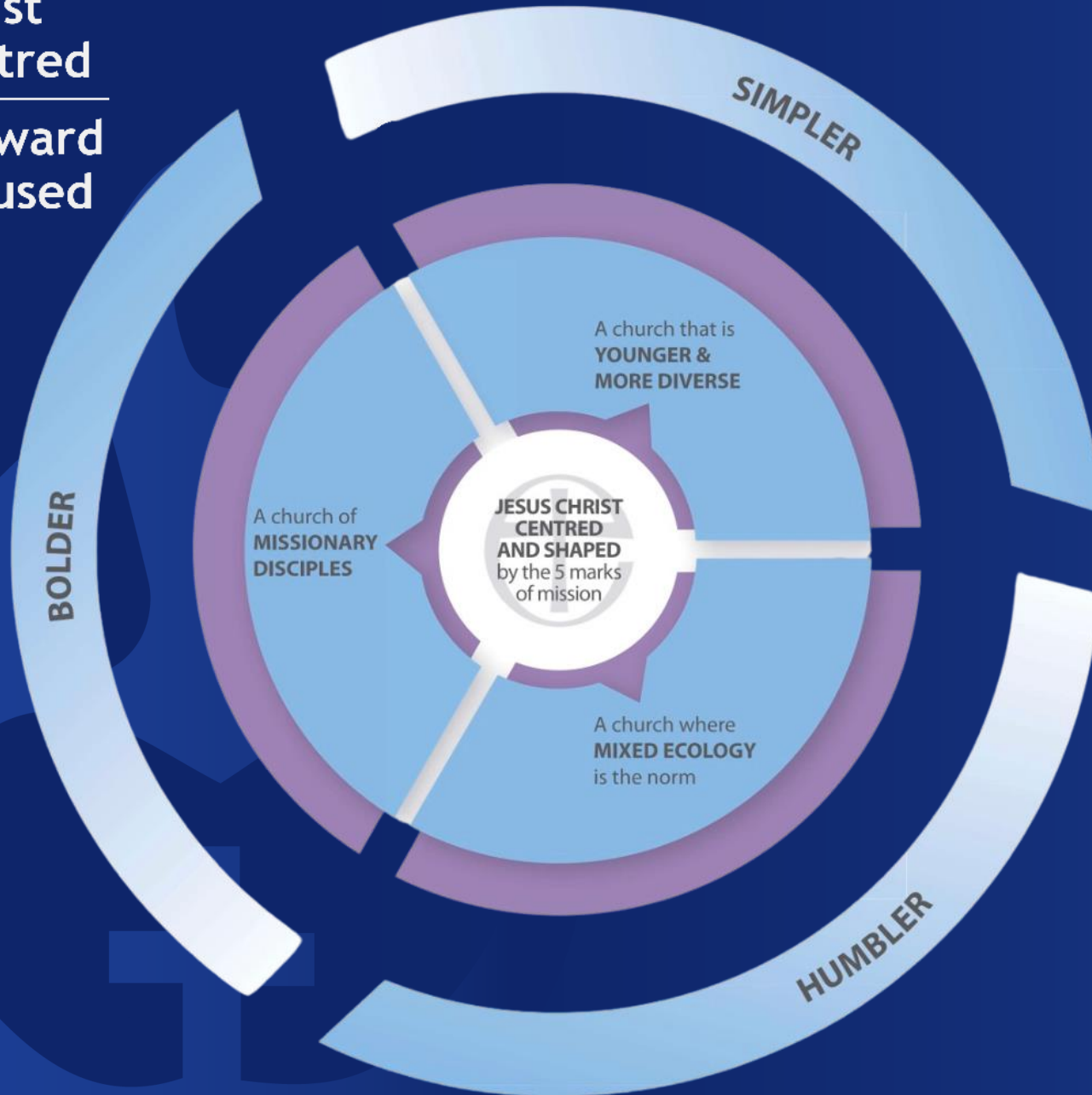
Lives embedded in our
parishes, walking
alongside others

Meeting, listening and
learning from others, seeking
diversity in our engagement

Receiving and celebrating
the gifts and hospitality
of others

Growth

Christ
Centred
Outward
Focused



Proclaim the Good News



Teach, nurture & baptise



Loving service



Seek justice & reconciliation



Sustain & renew the earth

Christ
Centred

Outward
Focused

Diocesan Investment Programme

DIP funding has been announced - £29m over 9 years.

Aligned with Southwark Vision 2024-2035

Enable all parishes to flourish with various initiatives that will be successful, achievable and replicable.

- Becoming a Church of missionary disciples
- To be a Church where mixed ecology is the norm
- To be a Church that is younger and more diverse

Christ
Centred

Outward
Focused

A large, stylized graphic on the left side of the slide. It features a flame-like shape in a lighter shade of orange, with a heart shape nested within its lower portion. Inside the heart is a white cross. The entire graphic is set against a solid orange background.

PARISH SUPPORT FUND

“Each month as I read the finance reports, I give thanks and rejoice in your faithful commitment to the Parish Support Fund (PSF). Thank you to all of you and your PCCs who give generously and work in partnership to support the ministry and mission across our Diocese.”

Bishop Christopher

- Thank you for your generosity supporting PSF collection rates of 99% in 2023 and more for 2024 to date
- Every £ of your pledge goes towards supporting ministry in parishes, whether yours or your neighbours

Next steps

- All our parishes are invited to make a pledge to resource our shared gospel ministry PSF information and request being sent digitally to parishes w/b 24 June (All PCC Secretaries and DCC secretaries)
- Please ensure this is an item on your next PCC agenda
- Please circulate the PSF mailing/email, encourage people to watch the Bishop's video and enjoy the booklet!



Next steps



- PCC prayerfully reflect on your pledge - a generous and realistic offer.
- For 2024 75% of our parishes increased their PSF pledge, with 54% matching or exceeding the rise in indicative costs - thank you.
- The pledge is made online. Your link for the online portal will be sent in the week beginning 1 July to all PCC secretaries, treasurers and incumbents. Please decide who is going to fill in the form!
- **Please submit your pledge by 15 September**

Date of PSF Meeting	Time	Archdeaconry/Area
Wednesday 26 June	Evening zoom (6pm)	Reigate
Monday 8 July	Afternoon in person 3.30pm Newcomen room	Woolwich
Wednesday 10 July	Lunchtime zoom (12.30pm)	Kingston
Monday 15 July	Lunchtime zoom (12.30pm)	Woolwich
Tuesday 16 July	Evening zoom (8pm)	Kingston
Thursday 18 July	Lunchtime zoom (12.30pm)	Croydon

Encouraging Generosity: ways we can help!

Generous July: Revd Jenny Dawkins has written 4 sermons from the lectionary for July

<https://southwark.anglican.org/giving/encouraging-giving-in-your-parish/preaching-generosity/>

Generosity Week: Sunday 29th September - Sunday 6th October

- Theme is “Living Generously”
- Resources are available on our diocesan website and will continue to be updated - <https://southwark.anglican.org/giving/encouraging-giving-in-your-parish/generosity-week/>
- From sermons to discussions round the dinner table! Podcasts, bible studies, sermon starters, C&YP resources and daily challenges...



Encouraging Generosity: ways we can help!

“Your Faith is powerful; so is your Will”

“70% of Anglicans give to church but only 3% leave a gift in their will”
(*Anglican Giving Survey*)

- **Encouraging Legacies:** our three - point plan we would love to share with PCCs and parishes
- Encourage people to write wills and take care of their loved ones.
 - Write wills for free with **Farewill**.
 - Use **FaithWill** - Christian Aid resources
<https://www.christianaid.org.uk/appeals/key-appeals/faith-will>



Encouraging Generosity: ways we can help!

Free church administration tools!

- Room bookings, ticketing, design, life events admin., regular giving through Parish Giving Scheme and more!
- Take a look - <https://www.churchofengland.org/resources/support-running-your-church-whats-available-nationally>

Here to help!

Gabby.Parikh@southwark.anglican.org

Gemma.Curran@southwark.anglican.org

Hannah.Starkins@southwark.anglican.org

Christ
Centred

Outward
Focused

SUPPORT FROM THE DIOCESE



- Governance aspects for PCCs
- Safeguarding Support, advice and training
- Treasurers' Conferences
- DAC
- Church & parish Buildings
- Digital Giving/Online Giving
- Volunteers
- Property
- Children and Young People
- Vocations (clergy & lay)
- Eco & environment
- JPIC - social justice
- Parish workbook on racial justice
- And much more - call us!

Areas the Diocese can Support you:

- Employment in Parishes
- Legal Frameworks
- Recruitment
- Pensions
- Disciplinary & Grievances

Christ
Centred
Outward
Focused

Buildings for Mission



Buildings for Mission

Additional financial resource from the National Church to better to support our parishes for the management of their churches ('Buildings for Mission'), divided into two projects:

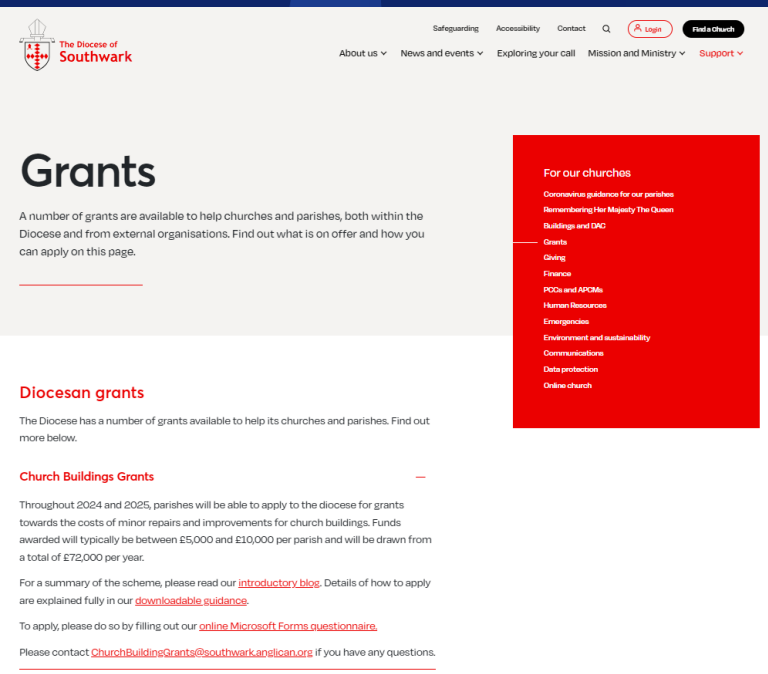
- Buildings Digital Provision
- Support for Churches

Support for Churches

- £11M in for diocesan staffing or parish grants, divided into three strands, from the National Church:
- Church Buildings Management Partnerships (Diocese not involved in this initiative)
- Church Buildings Support Officers (now appointed in Southwark)
- Minor Repair and Improvement Grants

Minor Repair and Improvement Grants

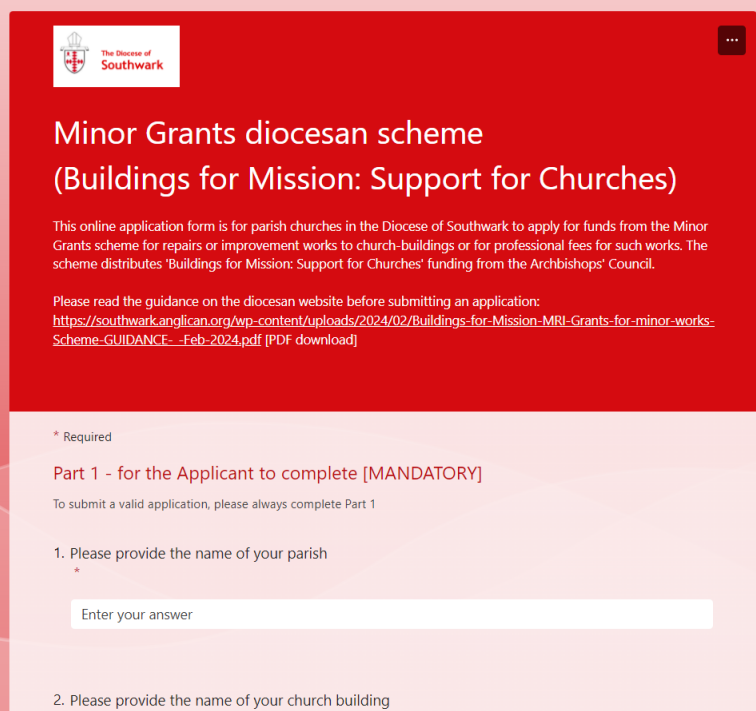
- During 2024 and 2025, the Diocese of Southwark will be distributing a small number of grants to parishes for the costs of minor repairs and improvements for church buildings.
- These grants will fund projects that are for stand-alone small-scale works that will cost in total up to £10,000 (or £12,000, depending on VAT implications).
- Depending on take-up, the grants typically awarded are expected to be between £5,000 and £10,000 per parish (from an overall total of £72,000 available each year) and would provide between 50% and 90% of the cost of a project.



Guidance is available on the website on how to apply, using an online form, with details of eligibility criteria.

Each application must comply with the minimum eligibility requirements. Full details of eligible buildings and eligible works are given on the website.

How to apply



Christ
Centred

Outward
Focused

Volunteering



- Aware of difficulties in finding volunteers
- Church time article underlines this
- We are undertaking a survey/research project facilitated by two Assistant Area Deans: Liz Newman and Nick Peacock
- Leading to a presentation and recommendations at Diocesan Synod in future



Christ
Centred

Outward
Focused

Parish Conversations



Christ
Centred

Outward
Focused

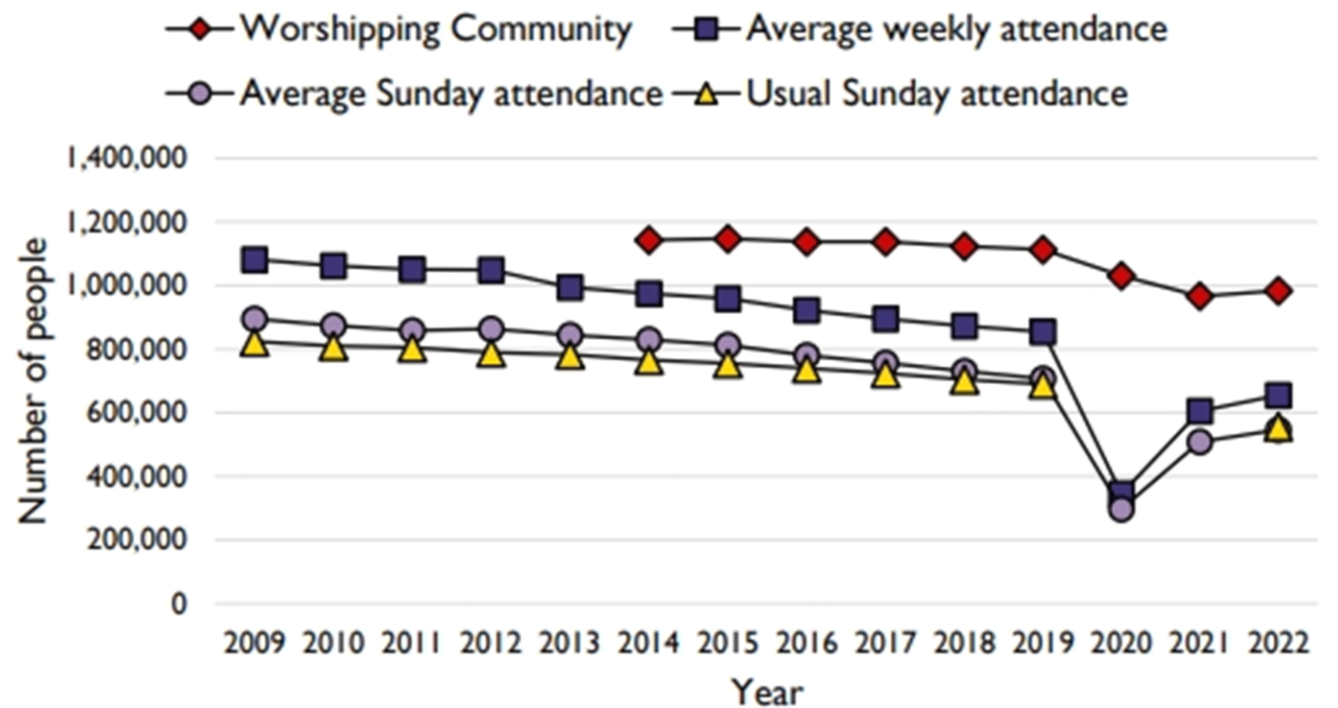
DATA AND INFORMATION AND MANAGEMENT

Parish Statistics


- Annual collection of mission statistics, finance etc
- National Church reports
- Understand trends in our Diocese and the Church of England
- Lots to celebrate!

Parish Statistics - Trends

- *Statistics for Mission report*



Parish Returns Website

 THE CHURCH
OF ENGLAND
Online Parish Returns System

Enter Your DataView Data ▾Diocese Menu ▾Users Menu ▾

Log out

Logged in as: Jackie PontinDiocese: SouthwarkParish:Church:

Welcome to the Church of England's online parish return system

Statistics for Mission, Return of Parish Finance and the Energy Footprint Tool


Entering data?
First, gather your figures from

- Service registers and numbers of baptisms, marriages, and funerals for statistics for mission (due by 31st January 2021)
- Accounts for return of parish finance
- Energy bills for the Energy Footprint Tool

If it's helpful to collect the figures on a paper form before you enter it online, you can download the forms below. Then ...
Enter your data

Viewing data?
Are you curious about how things have changed in your parish over time? Or are you wondering what you entered last year?
View your data

Finance, Mission & Energy Footprint

THE CHURCH
OF ENGLAND
Online Parish Returns System

Enter Your DataView Data ▾Diocese Menu ▾Users Menu ▾

Log out

Logged in as: Jackie PontinDiocese: SouthwarkParish:Church:

Select Church

Please select a Church before performing this task.

Select forms to display:

Your diocese has additional forms, you can select which ones are displayed on this page using the checkboxes below. Please note that depending on the width of your screen, having more than 2 forms selected may cause the churches table to be too wide to fit comfortably on screen.

☒ 2020 Return of Parish Finance☒ 2020 Statistics For Mission Return☒ Energy Footprint Tool 2020Refresh Page

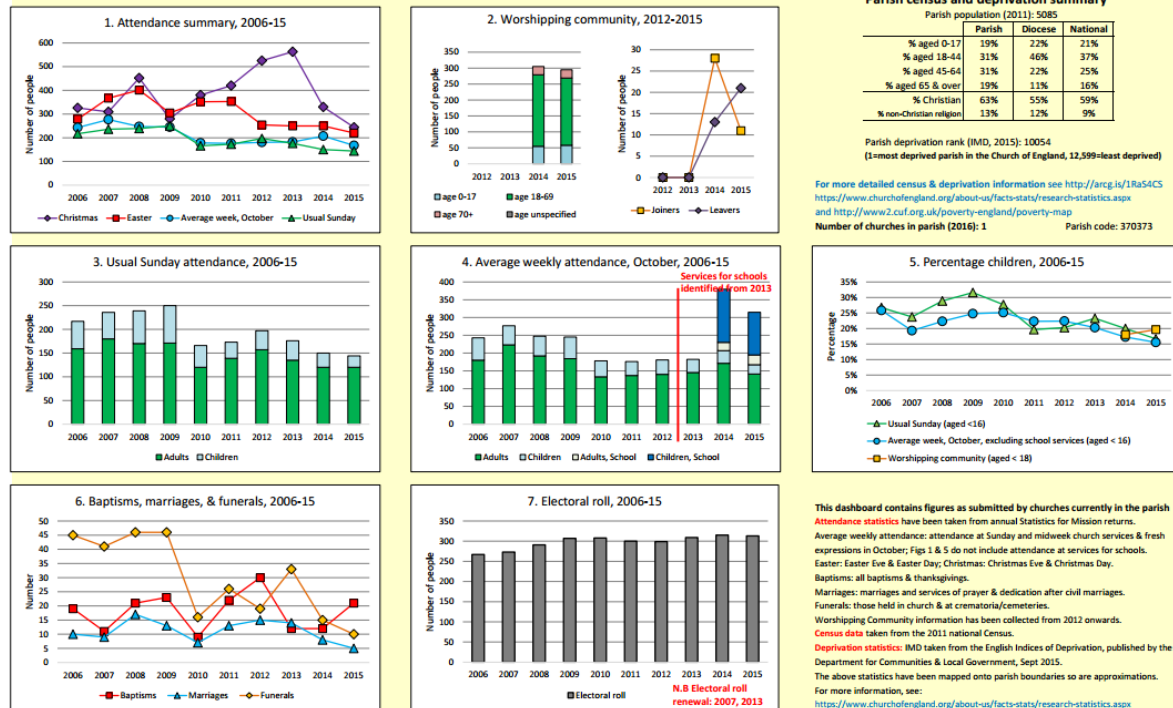
2020 Return of Parish Finance	N	%
Not Submitted	357	99%
Submitted	4	1%
Verified	1	0%
Total	362	

2020 Statistics For Mission Return	N	%
Not Submitted	203	56%
Submitted	159	44%
Verified	0	0%
Total	362	

Energy Footprint Tool 2020	N	%
Not Submitted	362	100%
Submitted	0	0%
Verified	0	0%
Total	362	

Parish Information - Dashboards

Dashboard for the parish of Shirley: St John in the Deanery of CROYDON ADDINGTON

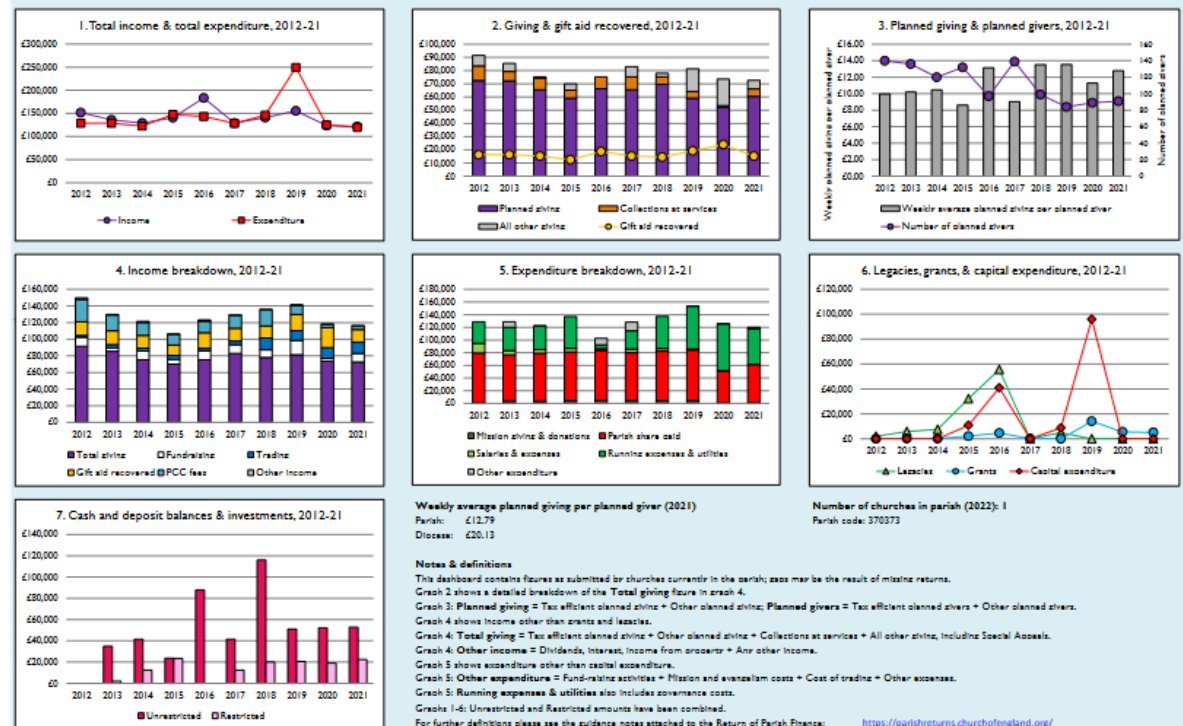


Variations in attendance from year to year may be the result of changes in the number of churches that submitted returns, or changes in parish/benefice structure.
Number of churches included in returns: 2006 1; 2007 1; 2008 1; 2009 1; 2010 1; 2011 1; 2012 1; 2013 1; 2014 1; 2015 1.
Produced by the Research and Statistics Unit, Church House, Great Smith Street, London SW1P 3AZ. Date of production: 8/12/16
Every effort has been made to ensure that data are reliable. We would be grateful to be notified of any significant errors or omissions by email to statistics.unit@churchofengland.org



Follow us on Twitter:
@cfeStats

Finance dashboard for the parish of Shirley: St John in the Deanery of CROYDON ADDINGTON



Variations from year to year may be the result of changes in the number of churches that submitted returns, or changes in parish/benefice structure.
Number of churches included in returns: 2012 1; 2013 1; 2014 1; 2015 1; 2016 1; 2017 1; 2018 1; 2019 1; 2020 1; 2021 1.
Produced by the Data and Analysis team, Church House, Great Smith Street, London SW1P 3AZ. Date of production: 17/11/22.
Every effort has been made to ensure that data are reliable. We would be grateful to be notified of any significant errors or omissions by email to statistics.unit@churchofengland.org



Follow us on Twitter:
@cfeStats

Parish Information

- Mission statistics generally by end of March
- Finance statistics by end of May - extended to the end of July
- <https://parishreturns.churchofengland.org/>
- Any questions to data@southwark.anglican.org

STATISTICS

ONES THE CHURCH COLLECTS

HOW MANY PEOPLE
TURN UP ON A
SUNDAY MORNING



HOW MANY
BAPTISMS,
WEDDINGS AND
FUNERALS
TAKE PLACE



NUMBERS AT
MAJOR
FESTIVALS

I WISH IT COULD BE
CHRISTMAS EVERY DAY



ONES THE CHURCH DOESN'T COLLECT

CUPS OF TEA
SERVED



PERCENTAGE
PARTICIPATION IN
ACTION SONGS



ALL OF THE MANY
DIFFERENT WAYS
YOU CONNECT WITH
THE COMMUNITY:
SCHOOLS WORK,
PASTORAL VISITS,
CHILDREN'S ACTIVITIES,
CHRISTMAS FAIRS,
AND MUCH MORE



Christ
Centred

Outward
Focused

COMMUNICATIONS



Christ
Centred

Outward
Focused

Meet the Team



Christ
Centred

Outward
Focused



Vernia Mengot

Editor & Communications Manager

- Editor of the Bridge
- Commissioning & developing content for publications and website
- Media relations
- Crisis management & parish support
- Lead for Education

079496 79401

verniamengot@southwark.anglican.org

Christ
Centred

Outward
Focused



George Clarke

Digital Communications Manager

- Oversight & development of digital strategy
- Social media campaigns
- Website development
- Commissioning content for social media & website
- Photography & videography

07496 887522

george.clarke@southwark.anglican.org

Christ
Centred

Outward
Focused



Sue Appelboom

Designer

- Design lead for all printed and online resources - including:
 - Anti Racism Charter
 - Annual Report
 - Christmas cards
 - Banners & events resources
 - Digital assets
- Liaison with printers & photographers

0207 939 9400

sue.appelboom@southwark.anglican.org

Christ
Centred

Outward
Focused



Joseph Callanan

Communications Assistant

- First point of contact for parishes
- Team administration
- Project management
- Distribution of the Bridge
- Forward planning
- Social media scheduling
- Liaison with external providers

0207 939 9435

communications@southwark.anglican.org

Christ
Centred

Outward
Focused



Anna Drew

Director of Communications

- Oversight of team and strategy
- Forward planning
- Resource development
- Commissioning Editor for the Bridge
- Media relations
- Bishops' public profiles
- Crisis management & parish support

07831 694021

anna.drew@southwark.anglican.org

Christ
Centred

Outward
Focused

“All truly Christian communication
leads to an encounter, in some
form, **with the living Christ.**”

John Pritchard

Communications priorities for 2024

- Fostering unity
- Encouraging our parishes
- Resourcing mission & ministry
- Growing engagement
- Embedding our Vision

Christ
Centred
Outward
Focused

Our Channels

- The Bridge
- Southwark Digest
- Prayer Calendar
- www.southwark.anglican.org
- Twitter @SouthwarkCofE
- Facebook.com/SouthwarkCofE
- Instagram @SouthwarkCofE
- YouTube
- Annual Report
- Printed publications
- Blogs
- News releases
- Episcopal letters
- Face to face



Christ
Centred

Outward
Focused

LAY MINISTRIES IN THE DIOCESE OF SOUTHWARK



Christ
Centred
Outward
Focused



Licensing and Commissioning:

- Last October we had a joyful celebration at Southwark Cathedral where we Licensed:
 - three Licensed Lay Ministers (LLMS) as Readers
 - three LLMs as Lay Pioneers
 - one LLM as a Pastoral Lay Minister and;
 - two Church Army Evangelists
- We also Commissioned:
 - three Southwark Pastoral Auxiliaries (SPAs),
 - one Lay Pioneer and one Children and Families worker.

In Training

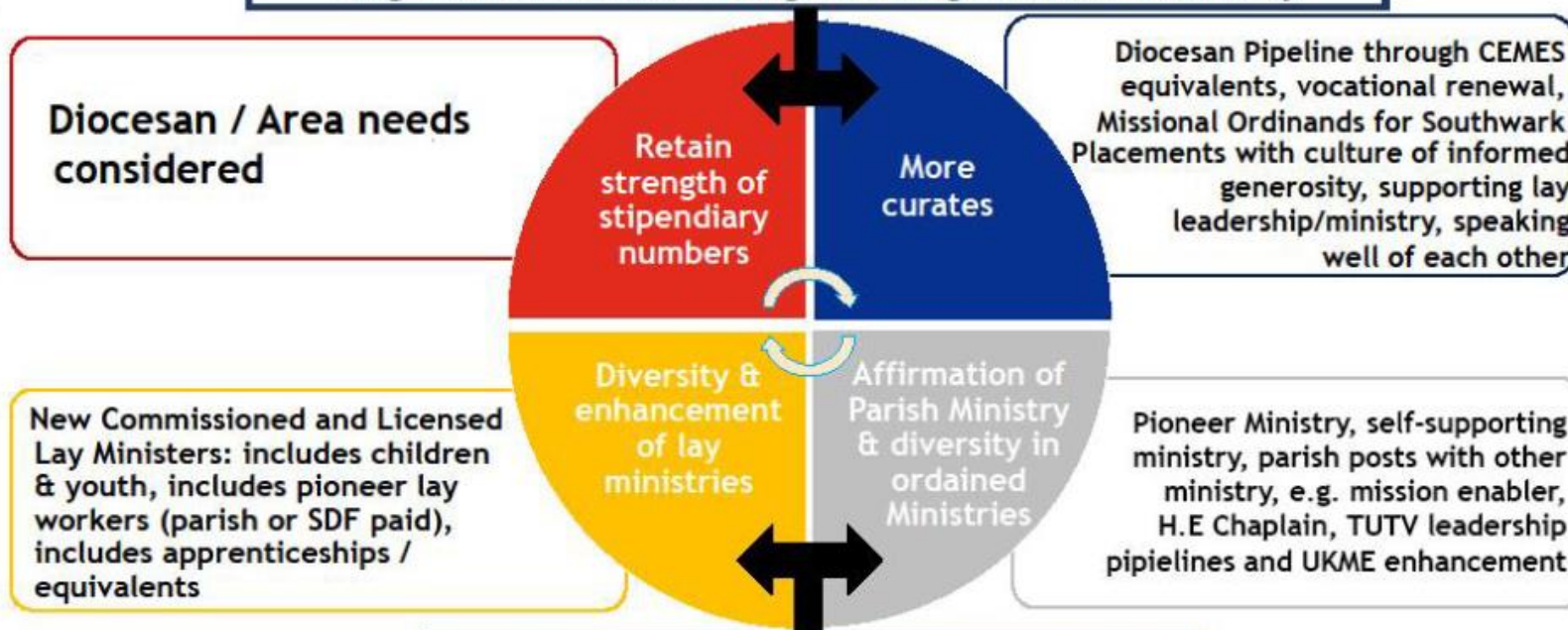
- We have eight in training who will be commissioned or licensed at Southwark Cathedral in October this year.
- These are:
 - 2 Licensed Lay Ministers who will be Readers
 - 1 Licensed Lay Minister who will be a Pastoral Minister
 - 2 Commissioned Pastoral Lay Ministers (SPAs)
 - 3 Commissioned Children's and Youth Workers

Selection

- We have held one selection day already which eight people attended and most of them will go forward for training in due course
- We have another selection day on Saturday 6 July 2024 and a selection evening on Thursday 25 July
- The number that we will have in training in 2024-2025 will depend upon these selection events but we already have 12 attending on 6 July and more are to come.

Strategic Ministry Vision and Deployment

Long Term Financial Modelling to Undergird Mission & Ministry



Including Pioneer Ministry, Lay and Ordained



Southwark Vision: Christ Centred and Outward Focused

Christ
Centred

Outward
Focused



Christ
Centred

Outward
Focused

Three Duties of the Layman

The Archbishop of York, preaching on vocation and Christian witness, said that vocation was not confined to the clergy, and enumerated three duties of the Christian layman. There was nothing sensational in this vocation of the laity, for true religion was not a series of thrills and emotions—it often had its dull patches.

The layman's first duty was by his own personal life to influence his fellows. He should apply the teaching of Christ in his ordinary surroundings and in his work. His second duty was that of intelligent witness: to know his faith and to be prepared to defend it. His third was to bear witness in his Church. That was to be done by regular church-going.

Encouraging Lay Ministry

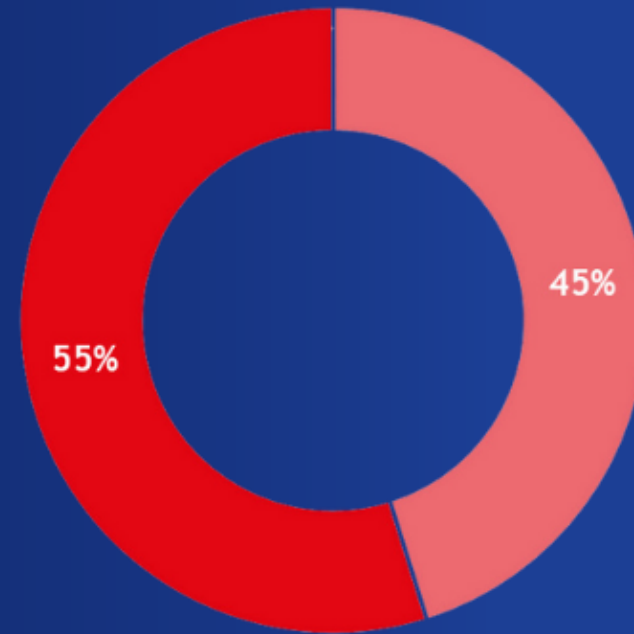
- We very much want to help more people to consider if they are called to a recognised Lay Ministry and what God might be calling them to do
- At present, your ministry is to help with church governance and administration, you might also be called to another role - or be called to one in the future.

Encouraging Lay Ministry

- We very much want to encourage vocations to Lay Ministries from those who are from a younger demographic
- We also want to encourage more Global Majority Heritage people to come forward
- We want to be fully inclusive and representative of the diversity of our parishes and Diocese.

- Average age of a Reader: 68
- Oldest Reader: 94
- Youngest Reader: 31

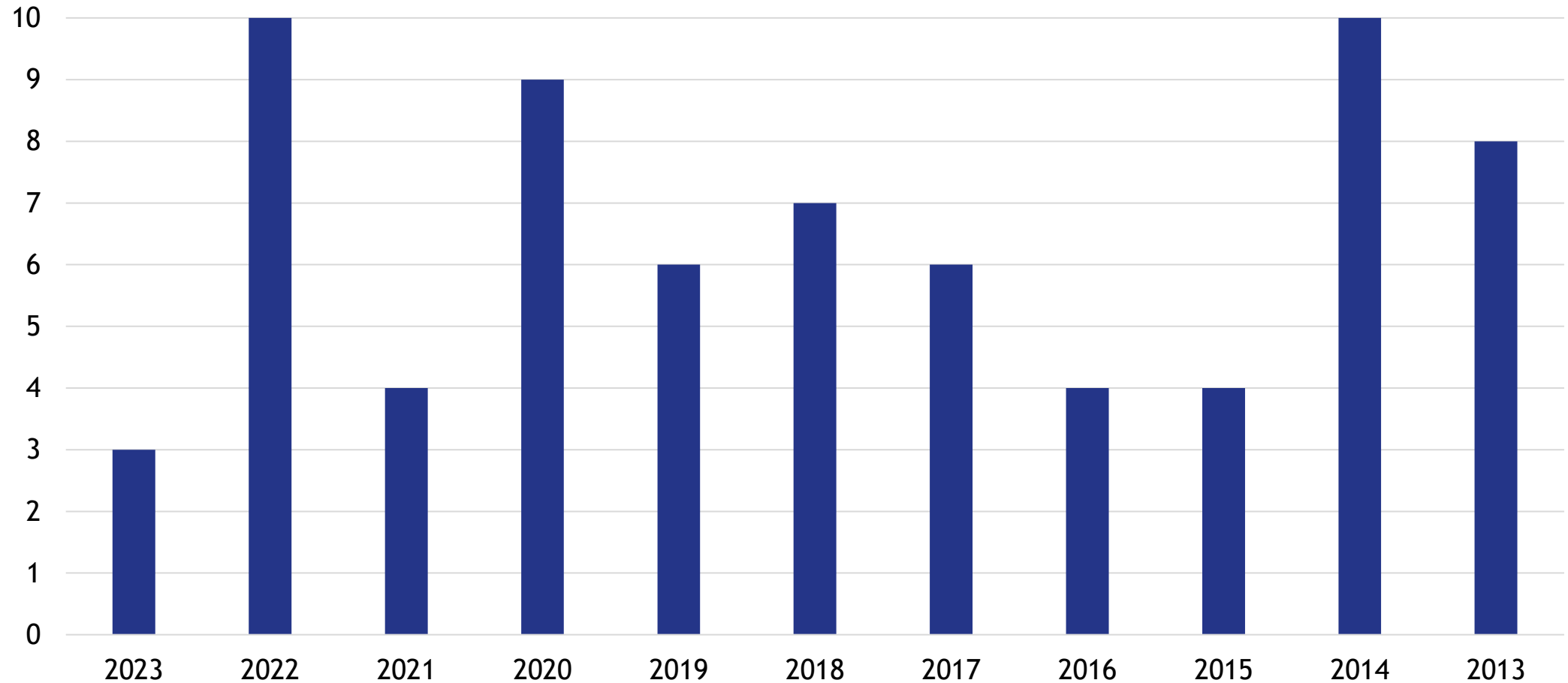
% of female
Readers



% of male
Readers

- Total number of Readers in the Diocese: 201
 - Readers with PTO: 80
- Number of churches represented: 186
- % of churches with Readers: 53%

Number of Readers Licensed In The Last Ten Years



Commissioned Pastoral Lay Ministers (SPAs)

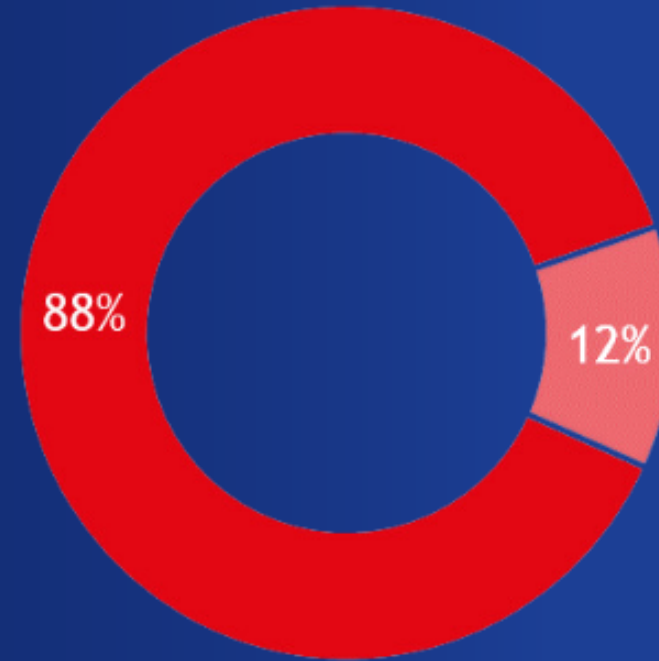
- Total number of SPAs in the Diocese: 116
- Number of churches represented: 121
- % of churches with SPAs: 35%

Christ
Centred

Outward
Focused

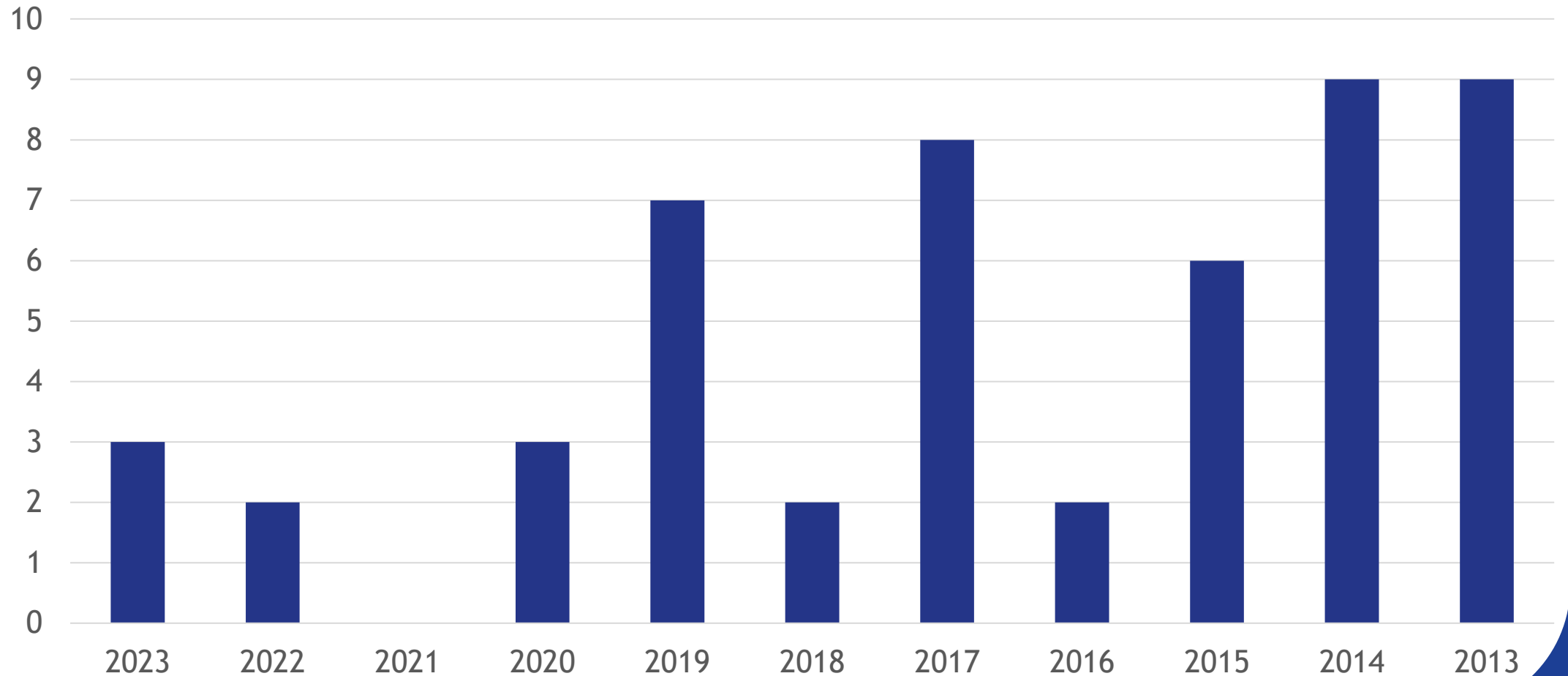
- Average age of a SPA: 66
- Oldest SPA: 90
- Youngest SPA: 51

% of
female
SPAs



% of
male
SPAs

Number of SPAs Commissioned in the Last Ten Years



We need your help

- In order to encourage Lay Ministries, we need people to talk about them and enthuse others
- We organise Taster Sessions
- These are mostly held online (but we do one in person during the Season of Lay Ministries) and the next one is on:
 - Wednesday 9 October 2024 on Zoom

The Season of Lay Ministries

- Will likely run again during Epiphany in 2025
- It is designed to encourage people to think about whether God might be calling them into new things
- There will be resources on the Diocesan Website and some resources for children and young people too. They will be published before Advent.

Finding out more

- Contact Carol Coslett, Assistant Director of Lay Ministry and she will be able to help you to know more about the ways in which people can begin to explore a vocation (carol.coslett@southwark.anglican.org)
- Those wishing to be Licensed Ministers and Commissioned Pastoral Lay Ministers (SPAs) need to attend a Vocation Forum and go through the Vocations process
- Others can go to a Taster Session and be assigned a Ministry Accompanier

Christ
Centred

Outward
Focused

KEY FUNCTIONS OF THE PCC AND THE ROLE OF PCC



Key Tasks

- The primary responsibilities of a PCC Secretary are to **support the PCC Chair**, usually the Incumbent, in the **preparation and organisation of meetings** and to **handle all correspondence on behalf of the PCC**.
- To prepare and distribute **Agendas, Minutes and Papers**
- To **organise the Annual Parochial Church Meeting (APCM)**; post the appropriate notices and commission, collect, duplicate and issue written reports, agendas, and minutes

Key Tasks

- To prepare an Annual Report to the APCM on the work of the PCC and send a copy to the Diocesan Secretary together with a copy of the Annual Accounts
- The Diocesan Office will also need to contact you from time to time to request specific information. Every effort is made to keep this to a minimum so we should be grateful if you would respond to all communications as soon as possible.

- A complicated system in the Church of England...
- Parishes operate as independent Charities
- The Church Representation Rules is your friend...
- Part 9 (Model Rules) relates to parish governance
<https://www.churchofengland.org/about/policy-and-thinking/church-representation-rules/>
- These are the default model rules for PCCs and Annual Meetings
- Annual Meeting can amend rules in Part 9, if it will better serve mission in the parish, subject to agreement of Bishop's Council
- Please speak to Jackie or Charlie first

Seven Marks of Good Governance

All underpinning organisational purpose

- Leadership
- Integrity
- Decision making
- Risk and control
- Board effectiveness
- Diversity
- Openness and accountability;



APCMs & Parishioners Meetings

- What are they for?
- What do you do?
- Date tool
- 2025 full ER revision will have a separate date tool to use
- Online Electoral Roll submission planned for next year

Christ Centred Outward Focused

Additional information, including many of the forms set out for financial and safeguarding governance, can be found on the [Parish Resources website](#).

Annual Parochial Church Meetings (APCMs)

Annual Parochial Church Meetings have detailed timings for electoral roll revisions. An [easy-to-use planner](#) is available to help you in determining when different aspects have to take place depending on the date of your APCM.

Diocese of Southwark

APCM Timetable

Annual Parochial Church Meeting Timetable Calculator for a year in which an existing Electoral Roll is being revised

Enter APCM date

31 / 05 / 2021

Revision of roll notice posted by must be at least 14 days before revision starts

Monday 19/04/2021

and not later than

Sunday 02/05/2021

Notice of APCM posted on or by the OUTSIDE of the church door

Sunday 16/05/2021

notice must be in place for **two** Sundays before APCM

Complete revised roll and post on or by the church door by

Sunday 16/05/2021

but not before


Monday 03/05/2021

New roll remains posted for at least 14 days. During this period errors & omissions may be corrected (but not new names added if no form had been completed before posting). Additional names may not be added until after the APCM

© 2021 - Diocese of Southwark

Amongst The Preliminaries

- Remember that A Safe Church expects PCC members to have completed a Confidential Declaration Form in advance of standing for office
- *Fit and proper persons* form
- Resources can be found on the Diocesan Website with links to Parish Resources website
- This includes useful tick lists

 Church of England Confidential Declaration form

Church of England Confidential Declaration guidance and privacy notice

The Confidential Declaration must be completed by all those wishing to work with children and/or adults experiencing, or at risk of abuse or neglect. It applies to all roles, including clergy, employees, ordinands and volunteers who are to be in substantial contact with children and/or adults experiencing or at risk of abuse or neglect.

If you answer yes to any question, please give details, on a separate sheet if necessary, giving the number of the question that you are answering.

The Privacy Notice attached to this form (see page 5 onwards) explains how the information you supply in your Confidential Declaration is used and your rights with respect to that data as required by the General Data Protection Regulation 2016/679 (the "GDPR") and the Data Protection Act 2018, (the "DPA 2018").

If you do not complete this form, or if you do not give true, accurate and complete information in response to the questions it contains, this may amount to misconduct under the Clergy Discipline Measure 2003 and your appointment will not proceed.

	YES / NO*
1. Have you ever been convicted of or charged with a criminal offence or been bound over to keep the peace that has not been filtered in accordance with the DBS filtering rules? (Include both "spent" and "unspent" convictions.)	YES / NO*
2. Have you ever received a caution from the police (including youth cautions, reprimands or warnings) that has not been filtered in accordance with the DBS filtering rules?	YES / NO*

*Delete as appropriate.

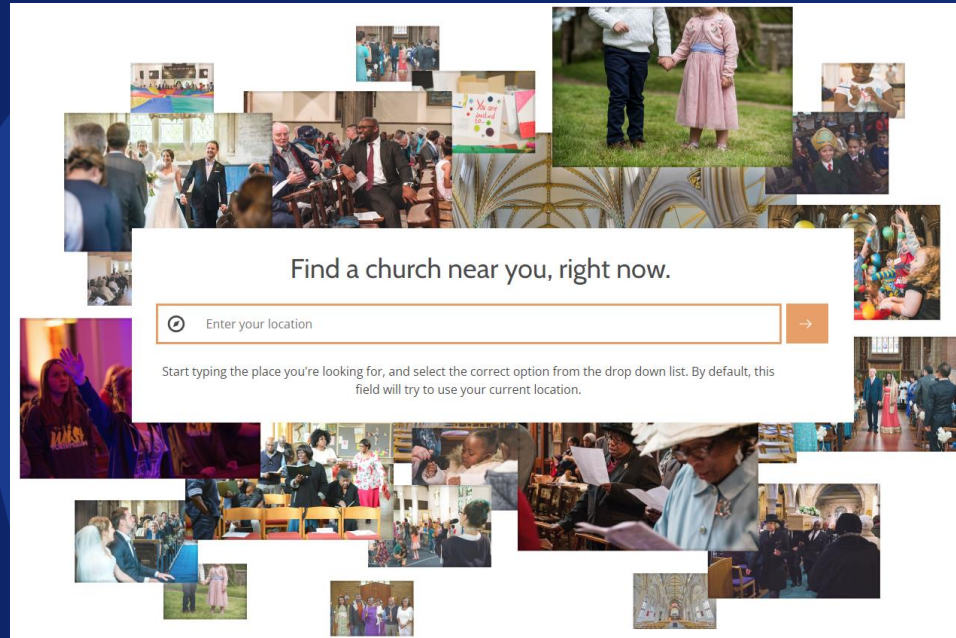
You do not have to declare any adult conviction where: (a) 11 years (or 5.5 years if under 18 at the time of the conviction) have passed since the date of the conviction; (b) it did not result in a prison sentence or suspended prison sentence (or detention order); and (c) it does not appear on the DBS's list of specified offences relevant to safeguarding (abously violent, drug related and/or sexual in nature). Please note that a conviction must comply with (a), (b) and (c) in order to be filtered. Further guidance is provided by the DBS can be found at https://www.gov.uk/government/uploads/system/uploads/attachment_data/file/617996/the-filtering-guidance-the-filtering-guidance.pdf.


Please note that the "rehabilitation periods" (i.e. the amount of time which has to pass before a conviction becomes "spent") have recently been amended by the Legal Aid, Sentencing and Punishment of Offenders Act 2012. Since 10 March 2014, custodial sentences greater than four years are never "spent". Further guidance in relation to the "rehabilitation periods", please see <https://hub.united.org.uk/what-should-you-declare-on-your-childrens-checks/>.

You do not have to declare any adult caution where: (a) six years have passed since the date of the caution it does not appear on the DBS's list of specified offences relevant to safeguarding; and (b) in order to be filtered. Please note that since 10 March 2014, youth reprimands, warnings and cautions, are automatically filtered. Please note that you must comply with (a) and (b) in order to be filtered.

Christ Centred Outward Focused

Useful Apps & Websites



 THE CHURCH OF ENGLAND
Online Parish Returns System

Log in

Login

Username *

Password *


☐ Remember me

Log in

[Forgot your password?](#)

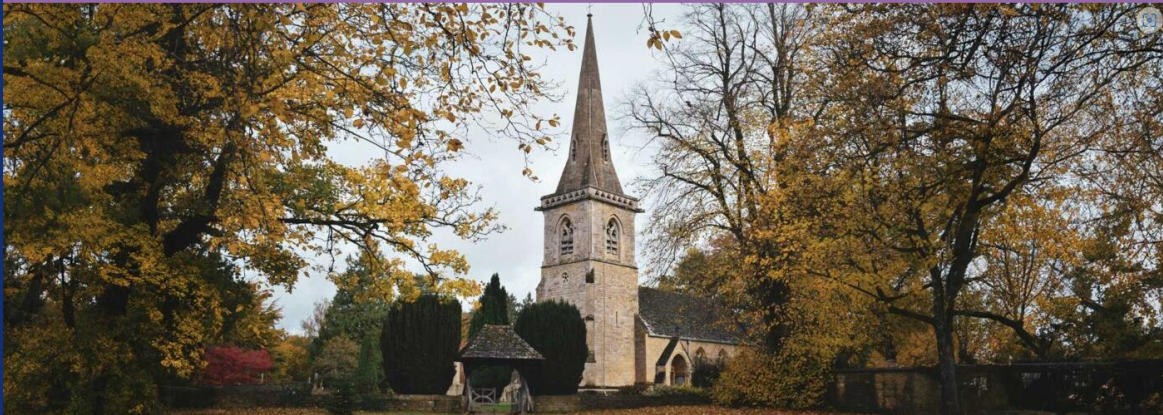
[Forgot your username?](#)

[Don't have an account?](#)

 Parish Resources

Search ...

[PCC / APCMs](#) [Finance](#) [Giving](#) [Buying](#) [People](#) [Administration](#) [Buildings](#) [Other](#) [Order Resources](#)



Support with the day to day

This site is managed by the Giving & Generosity team and offers resources to support the everyday governance and administration of the local church.

Sign up to our Newsletter

Christ Centred Outward Focused

https://www.churchorganiser.org

THE CHURCH ORGANISER

FEATURES • IKNOW CHURCH • NEWS • ABOUT • SUPPORT • EVENTS • REGISTER

GET IN TOUCH

Upgrading from the Life Events Diary

Tools to help you organise church life.

All in one place



THE CHURCH OF ENGLAND

REGIONAL EVENTS

The Life Events Diary

The Life Events Diary is designed to help you manage your occasional offices. Whether they're Weddings, Baptisms, Funerals or Banns. With automated reminders, online enquiry forms and digital production of the Marriage Registration Document, the Life Events Diary covers all bases.

Features include:

- Dedicated online enquiry forms for all of your Life Events
- Invoice and take payments for your Weddings and Funerals
- Digitally produce the Marriage Document and print it out
- Keep those involved up-to-date with automated reminders
- Never forget a date with scheduled prompts for follow-ups and anniversaries
- Generate your Statistics for the amount of Life Events month on month, and year on year

"We have been using the Life Events Diary to trigger the sending of sympathy cards after funerals. I recently had a lady attend one of our services, who when I engaged with her, told me that she had been meaning to come to the Church as it was two years since her husband's funeral. The card we had sent, had been just the trigger she needed to come." - David Marsh - St Bartholomew's, Leicester



THE ANNUAL INSPECTION

THE CHURCHWARDENS MUST HAVE A LOOK AROUND THE CHURCH ONCE EVERY YEAR OR SO. THESE ARE THE SORTS OF THINGS THEY SHOULD BE LOOKING FOR:

SIGNS OF DANGER

(EG WIRING THAT DOES NOT LOOK QUITE RIGHT)



SIGNS OF MOVEMENT (IN OLD BUILDINGS)

NO...
NOTHING



SIGNS OF DEATH- WATCH BEETLE

CHURCHWARDENS HAVE TO
WATCH CLOSELY TO SPOT SIGNS
OF CONTINUAL BORING



SIGNS OF LIFE

IT'LL HAVE TO
COME DOWN - WE CAN'T
RISK HAVING LEAVES
IN THE GUTTERING

