

# Finance and Generous Giving Update March 2022



Dear Colleagues

We want to express our thanks for all that you do, especially as we know that the beginning of the year is very busy for parish treasurers. Thank you for your part in parishes' continued magnificent support of the Parish Support Fund (PSF), culminating in a year-end collection rate for 2021 of 99.4%. Bishop Christopher wrote to parishes last month to express his thanks and we attach his [letter here](#), just in case it has not reached you.



We appreciate that, as we emerge from Covid restrictions, there are many challenges and we hope you find the following stories, resources and updates helpful. Please do contact us if you have any concerns, suggestions or would like some assistance.

With kind regards

**Mark & Gabby**

## News

### Listed Places of Worship Grant Scheme

This scheme covers the cost of VAT on repairs etc. to listed places of worship. It is very welcome news that the Government has decided to extend it for another three years until 31 March 2025.

### Energy update

As prices rise and suppliers fail, thank you for your efforts in tracking and trying to find cheaper tariffs. Parish Buying (PB) were close to sourcing new energy contracts but, frustratingly, "following the Russian invasion of Ukraine, all suppliers withdrew their pricing." PB will produce quotes as soon as the market allows. If you would like an energy quote, first log-in to PB then fill in the [application form](#). It includes your current contract end-date to help them to prioritise those most in need. No need to chase PB if you have already logged a quote request!

It is helpful to consider how to use less energy. Jack Edwards, our

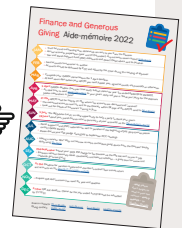
Diocesan Environmental Officer, has gathered some simple measures in his blog '[Five energy-saving tips for churches](#)'. Further information on energy saving measures is available from [CofE Church Care](#) and [Eco Church A Rocha](#) resources hub. Awareness raising is key so please look at our Diocesan website [Environment page](#) to help you with your environmental journey.

### Problems with NatWest Bank accounts?

A number of parishes have recently experienced problems with NatWest, even having their accounts suspended. There are issues updating the business profile and recognising exempted charities. We have asked the National Church to liaise with NatWest to try and resolve this issue. Sadly, this is not the only bank closing branches or increasing some of the workload for treasurers. If you are having problems with your bank please let us know. Our finance team is monitoring the situation. Please contact [John Jackson](#) or [Janet Boyce](#) for advice.

### Finance calendar

We have put together an aide-memoire for the year with key finance and governance dates for treasurers – we hope you find this useful.



### GoodBox update

A new version of software for the GBx Mini is available, including:

- Contactless limit increased to £100;
- User alerts if sending offline donations in areas of weak signal;
- Multiple retry mechanism if network connection interrupted.

If your device is connected to a good network it should automatically download the update when next switched on. The *Main Menu* should change from £45 to £100. If it does not, please try a reboot to force the update.

For any issues, please contact [support@goodbox.com](mailto:support@goodbox.com).



## Seasonal Top Tips

... to encourage Giving during Lent and Easter

**1** Use our [QR posters](#) for Lent or Easter to encourage people to give and direct people to your online giving page.



**2** Raise funds for Lent Call using these [fundraising tips](#); with a specific campaign on your contactless sum up machine ([use this image](#)), or download the [Lent Call poster](#) with QR codes.



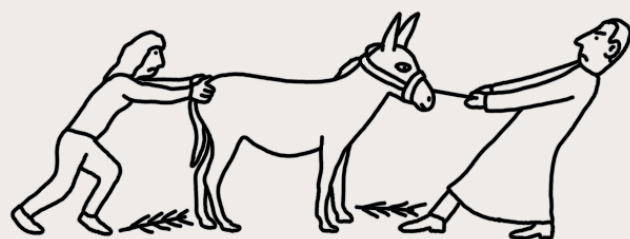
**3** Mothering Sunday – remember to make your contactless device visible so visitors who are not carrying cash can give easily!

**4** Do you advertise 'ways to give' in your pews? At key services with many visitors, such as concerts, try our [A6 postcard](#) (editable template) to encourage giving.

**5** Share what we have through donations to our local foodbanks or partnering with [Acts435](#).

**6** Say thank you! As we near the end of the tax year it is a good time to thank people for their faithful giving. Encourage them by reminding them how their giving has enabled your church to be a transforming presence in their community. See our draft letter.  

THANK YOU



## Parish spotlight

### Contactless project

We are delighted that our parishes who took part in our contactless and online project (subsidised by the Church of England) have raised over £75,000 by mid-February. Round 2 contactless devices were distributed in November and, together with new online accounts, 40 churches raised more than £26,000 in the past 10 weeks. A fabulous response which demonstrates how digital giving can encourage people to give generously.

If you don't have a contactless machine why not borrow one of our Diocesan machines? All the donations go to your church – simply apply using [this form](#).

### South Beddington & Roundshaw go contactless

This parish borrowed a machine and vicar, Revd Angela Gbebikan, reported "It was extremely useful to us over the Christmas/New Year period (especially given that we had eight panto performances). Also, for other services and open church it certainly proved its worth. One of our churchwardens, who was a little sceptical about contactless, is now a fervent convert. We have now purchased our own CollecTin!"

## Training

### Environmental fundraising webinars 2022

The National Environment and Climate Change Team is running a number of excellent webinars on how to approach environmental fundraising.

- Part 1: What opportunities exist in the environmental funding landscape? 8 March 2022. Video available.
- Part 2: How to start environmental fundraising. 15 March 2022, 12:00-1:30
- Part 3: – Environmental fundraising for experienced fundraisers. 22 March 2022, 12:00-1:30

Further details and the booking links can be [found here](#). Previous videos are also well worth a look.

## Generous Giving Adviser

Would you like to join us as a Generous Giving Adviser? Or do know someone who would? Are you interested in digital or legacy fundraising?

We have two part-time opportunities:

- Generous Giving and Digital Fundraising Adviser
- Generous Giving and Legacy Fundraising Adviser

Please share or view our latest [part-time vacancies](#).

For more information please contact:

**Gabby Parikh, Director of Giving and Parish Funding**  
gabby.parikh@southwark.anglican.org

**Mark Rhodes, Director of Finance**  
mark.rhodes@southwark.anglican.org

# Finance and Generous Giving Aide-mémoire 2022



JAN

- Trust fund and outstanding loan statements are sent to you from the Diocese.
- Annual accounts preparation (year end 31 December). Any accounts issues contact [Janet Boyce](#).
- Year end Parish Support Fund (PSF) statements and Direct Debit advice sent to parishes.

FEB

- Send accounts to examiner or auditor.
- Accounts should be approved by PCC and signed by the Chair during the meeting of approval.

MAR

- Complete your GASDs claims before the 5 April deadline.
- At least seven days before your APCM you must publish your signed accounts, electronically or otherwise.

APR

- **5 April** GASDs deadline (two year time limit). Submit claims for year the ended 05/04/20 by 05/04/22.
- An ideal time to send [thank you letters](#) to your givers. Why not plan a 'thank you' party for the Platinum Jubilee celebrations in June?

MAY

- **31 May** APCM must be held by 31 May where the accounts are discussed and 'received'.
- The examined accounts must be sent to the Diocese within 28 days of the APCM, send to [Janet Boyce](#).
- Look out for details of Treasurers' training in June.

JUN

- **5 June** 'The Big Jubilee Lunch', an ideal opportunity to hold a party to thank your givers.
- **28 June** Submit your parish finance returns (summary of your accounts) via the [Parish Returns Portal](#).

JUL

- Parish Support Fund (PSF) materials are sent to parishes at the beginning of July. (Any queries please contact Gabby Parikh.)
- Please discuss your PSF pledge during July to September PCC meetings.

AUG

- Having a summer fête? Why not borrow an extra contactless giving device from the Diocese? Simply apply using [this form](#).

SEP

- **Mid-September** Submit your 2023 PSF pledge to the Diocese via the PSF link sent to you in July.
- Embrace national *Generosity Week*, *Creationtide* and *Harvest* initiatives – a great time to review and celebrate generous giving.

OCT

- **31 Oct** Deadline for parishes registered as charities to submit their annual return and accounts via the [Charity Commission website](#).

NOV

- Prepare Gift Aid to ensure you meet the year-end deadline.

DEC

- **31 Dec** Gift Aid deadline. Claims for the year ended 31/12/18 must be submitted by 21/12/22.

...and, please don't forget to send in your fee returns – every month – to Heather Cassidy.