

Former places of worship in the Diocese of Southwark

SOUTH LAMBETH, ST STEPHEN

Ref: SOU06

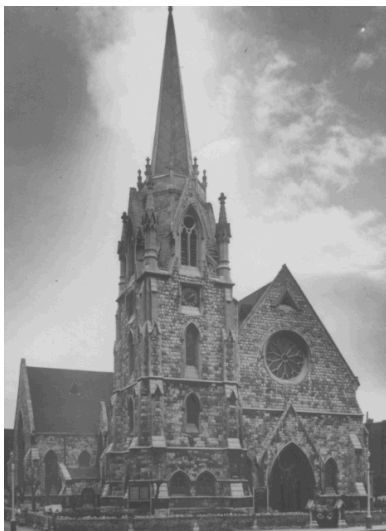
Status	demolished
Borough	Lambeth
Present parish	SOUTH LAMBETH, ST STEPHEN
Built	1861
Build architect	J Barnett

Further information	<p>A very large neo-gothic church, which seated 1200 and has been described as “like an aircraft hangar” internally. Damaged in World War 2, but the spire was allegedly rebuilt c.1956 so it may have remained open until demolished in 1969 [an Act of Parliament was required]. A smaller church was built on the same site - the present St Stephen's is still open. The remainder of the site of the old church is still Diocesan Trust property, with buildings known as Mytton House and Crozier house being leased to St Thomas's Hospital Trust. More history at the British History website.</p> <p>Documents on the Diocesan file include the Sain Stephen South Lambeth Act 1967, an undated quinquennial inspection report and recollections of a former curate.</p>
---------------------	-------------------------------------------------------------------------------------------------------------------------------------------------------------------------------------------------------------------------------------------------------------------------------------------------------------------------------------------------------------------------------------------------------------------------------------------------------------------------------------------------------------------------------------------------------------------------------------------------------------------------------------------------------------------------------------------------------------------------------------------------------------------------------------------------------------------

Address	St Stephen's Terrace, off South Lambeth Rd
Postcode (if located)	SW8 1DG
Grid reference	TQ 306 771

Grade	N/A
Listed Building ref. (if applicable)	N/A
Listing found? (if applicable)	NO
CPW / CCC report on file?	NO

Record office & reference	LMA/P85/STE (registers up to 1948)
Diocesan property reference no.	0893



NOTES

Record office:
LMA=London Metropolitan Archives
www.cityoflondon.gov.uk/lma/

CPW/CCC refers to the reports prepared on churches proposed for demolition

Click on grid reference to view a location map (accurate to within 100 metres)

For further information contact
pastoral@southwark.anglican.org

Last updated August 2008