



A toolkit for Deaneries

Parish Statistics, Data and Dashboards

What information is requested from parishes?

All parishes in the Church of England are asked to send in data on:

- church attendance (also referred to as ‘statistics for mission’ or congregational count);
- parish finances (income, expenditure, giving etc).

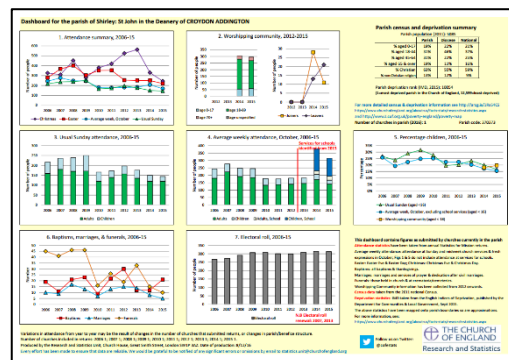
How is the data used?

The data sent in is compiled at Diocesan level and published by the Church of England in a series of annual reports which include *Statistics for Mission* and *Parish Finance Statistics*. These reports which include comparative information on all diocese in the Church of England can be found on the statistics page of the Church of England’s website here: <https://www.churchofengland.org/about-us/facts-stats/research-statistics.aspx>

The information from parishes also feeds into research on church growth, such as the ground-breaking report *From Anecdote to Evidence* report (<http://www.churchgrowthresearch.org.uk/>) and is used by the Church Commissioners in decisions on funding special projects through the Strategic Development Funding.

Parish Dashboards. As well as diocesan and national level summaries, this information is available at a parish level. In 2016, parish dashboards were compiled for the first time for all parishes in the Church of England.

These parish dashboards show a parish’s ‘statistics for mission’ information from 2010 to 2015 and were sent to all Southwark parishes in February 2017.

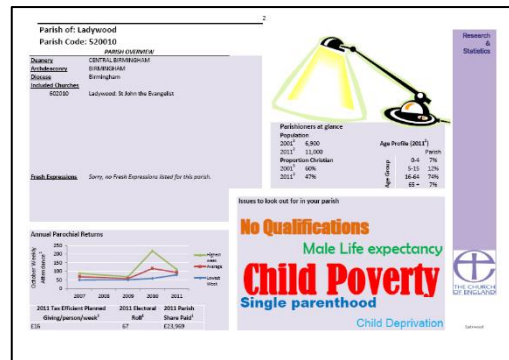


An example of a parish dashboard is shown here.

If you haven’t seen the dashboard for your parish, please ask your PCC Secretary or contact us on data@southwark.anglican.org and we will send you a copy. Updated parish dashboards showing information for 2016 will be available in late 2017 and will be sent to all Southwark parishes.

Finance dashboards are also being developed and will be also available in late 2017. These will be sent out to parishes when they are available.

Parish Spotlights. There is more information available for each parish which socio-economic data such as Christian affiliation, population age and ethnicity profiles, household structures, deprivation, employment, schools and qualifications. This parish level information has been brought together with some of the attendance data in a report called *Parish Spotlight*.



Parish Spotlights are somewhat dated now as the most recent information included is for 2011, but they are being updated and in the meantime may still give a useful context for thinking about mission activities in your parish. A *Parish Spotlight* for each parish in Southwark Diocese can be found on the Diocesan website here:

<http://southwark.anglican.org/information/resources/parish-statistics>.

On the same webpage, you can also find a link to CUF's information on comparative poverty levels in parishes.

How to send in your statistics

Data needs to be submitted for each *individual* church. This is an important to note particularly where there is more than one church in a parish, team ministry or united benefice.

All parishes are asked to use the online parish returns system for capturing church data on attendance and finance. Access to this system can be found here:

<https://parishreturns.churchofengland.org/>

While the data needs to be entered on-line, forms showing what is asked for together with guidance on filling in the data is available here:

<https://parishreturns.churchofengland.org/UserGuides/2016StatisticsForMission.pdf>

<https://parishreturns.churchofengland.org/UserGuides/2016FinanceForm.pdf>

All parishes should have a nominated person with a password to allow data entry. However, we do know the people change roles and passwords are mislaid! So if you need help in accessing the system, please first speak to your PCC Secretary or Parish Administrator (where you have one) who should have a record of the password used last year and can create user accounts for other people in the parish.

If, for any reason however, you are still unable to enter your church's data using the online system please do contact the Archdeacons' PA in your Area Office who will be happy to assist you, including with password resets.

If you need assistance with the submission of the finance data or your annual accounts, please contact Mr Bob Dallimore (Parish Finance Officer) at Trinity House on 020 7939 9431 or bob.dallimore@southwark.anglican.org

We asked for the 2016 membership figures to be submitted by **31 January 2017** and the 2016 finance data by the end of **31 May 2017**. As these deadlines have now past, any data for 2016 or earlier years needs to be sent in using the process for incorrect or missing data outlined below.

What if I can see my data is incorrect or has missing information?

Everyone involved in producing and using this parish data is very keen for it to be as up to date and accurate as possible. If you can see any gaps or obvious errors in your parish dashboards then please you can provide updated information on mission statistics on the form which can be found here: <https://www.churchofengland.org/about-us/facts-stats/research-statistics/statistics-for-mission/correcting-your-data.aspx>

You only need to complete those questions for which the information needs to be updated - there is no need to fill in the whole form to correct a few erroneous numbers.

Missing financial data should be sent to Bob Dallimore at bob.dallimore@southwark.anglican.org

Finally - thank you!

Your painstaking work in collecting and submitting data on your parish makes a real difference to us all understanding our parish congregations, the wider community as well as helping the National Church better understand our Diocese.

The data can also help your PCC understand how your attendance and income shifts over time so you can plan your mission and ministry as well as explain more about your parish when it comes to finding a new Vicar.

I can assure you that we aim to ask only for data you already have to collect in various ways or which will be useful.

If you need more information the data collected and can be used by your parish or deanery, please do contact us on data@southwark.anglican.org

Jackie Pontin
Head of Strategic Projects
21 July 2017