

McCABE BOOKING FORM & CONDITIONS

All bookings are subject to our full booking conditions which appear on our website : www.mccabe-travel.co.uk.

A copy of these can also be e-mailed or posted to you on request. By asking us to make your booking, you confirm you have had access to and agree to the full booking conditions which you should read.

The booking conditions provide for the payment of cancellation charges if you cancel or fail to make payment when due. They also include limitations and exclusions of our liability to you. For international travel by air, sea or rail, our liabilities are limited and excluded as if we were a carrier within the applicable international convention or EU regulation (for example, the Montreal Convention, the EC Regulation on Air Carrier Liability and the Athens Convention). A surcharge may be payable in limited circumstances where certain costs increase after booking.

Your contract will be with McCabe Travel Limited trading as McCabe Pilgrimages. This contract comes into existence when we dispatch our confirmation invoice to the person who makes the booking or your travel agent.

All McCabe flight and flight-inclusive holidays are financially protected by the ATOL scheme. When you pay, you will be supplied with an ATOL Certificate. Please ask for it and check to ensure that everything you booked is listed on it.

Please see our Booking Conditions for further information or for more information about financial protection and the ATOL Certificate see: www.atol.org.uk/atolcertificate

British citizens require a British passport in order to travel to the destinations we feature. This usually takes less than six weeks to obtain, unless you are over 16 and haven't held a passport previously, in which case you need to allow at least six weeks. Current visa and any compulsory health requirements for British citizens with a British passport are shown in the tour brochure. Requirements may change. Please ensure that you have at least six months validity on your passport on the date you travel.

The Foreign and Commonwealth Office publishes regularly updated travel information on its website www.fco.gov.uk/knowbeforeyougo which you are recommended to consult before booking and in good time before departure.

In the event of any flight delay or cancellation at your UK or overseas point of departure, the airline is responsible for providing such assistance as is legally required by the Denied Boarding Regulations. The ferry, tunnel or rail operator is similarly responsible in relation to any delayed or cancelled sea crossing or international rail departure. Except where otherwise stated in our brochure or on our website, we regret we cannot provide any assistance in such circumstances other than information and advice to the extent we are in a position to do so.



SOUTHWARK BOOKING FORM

PLEASE COMPLETE IN BLOCK CAPITALS

A pilgrimage to the Holy Land

19th - 26th February 2018

								Emergency Contact	
Room	Title	Surname	First Name (as passport)	Known As	Date of Birth	Nationality	Mobile No	Name	Tel (pref Mobile)
1									
Address for Person 1 (used for correspondence)				Address for Person 2				Special requests (single room, special diets, connecting flights, etc)	
Post Code				Post Code				Church/Parish	
Home Tel				Home Tel				Archdeaconry	
Email				Email					
Please tick this box if you have travelled with McCabe before:								For Office Use	
Insurance will automatically be added to your invoice unless you write "NO" in this box: (see under '3' in the conditions)								No	Ref

McCABE BOOKING FORM & CONDITIONS

Data Protection Please be assured that we have measures in place to protect the personal booking information held by us. This information will be passed on to the principal and to the relevant suppliers of your travel arrangements. The information may also be provided to public authorities such as customs or immigration if required by them, or as required by law. Certain information may also be passed on to security or credit checking companies. If you travel outside the European Economic Area, controls on data protection may not be as strong as the legal requirements in this country. We will only pass your information on to persons responsible for your tour travel arrangements. This applies to any sensitive information that you give to us such as any disabilities, dietary or religious requirements. (If we cannot pass this information to the relevant suppliers, whether in the EEA or not, we will be unable to provide your booking. In making this booking, you consent to this information being passed on to the relevant persons).

Cancellation Should you or any member of your party need to cancel your booking once it has been confirmed, the party leader must immediately advise us in writing. Your notice of cancellation will only be effective when it is received in writing by us at our offices. As we incur costs from the time we confirm your booking, the following cancellation charges will be payable. Where the cancellation charge is shown as a percentage, this is calculated on the basis of the total cost payable by the person(s) cancelling excluding insurance and amendment charges.

Insurance premiums and amendment charges are not refundable in the event of cancellation.

Period before departure within which written notification of cancellation is received by us	Cancellation charge per person cancelling
---	---

49 days or more	Deposit
48 to 21 days	45%
20 to 8 days	75%
Less than one week	100%

Depending on the reason for cancellation, you may be able to reclaim these cancellation charges (less any applicable excess) under the terms of your insurance policy. Claims must be made directly to the insurance company concerned.



McCabe Pilgrimages is a member of the Association of Independent Tour Operators.

AITO members like McCabe strive to create holidays with high levels of professionalism and a shared concern for quality and personal service. The Association encourages the highest standards in all aspects of tour operating and members sign up to a quality charter. www.aito.co.uk

McCabe Travel Ltd Registered Office: 11 Hillgate Place, Balham Hill London SW12 9ER Company Registration No: 2125334

I accept McCabe's Booking Conditions and I enclose a cheque made payable to *McCabe Pilgrimages*

£200 deposit per person (plus insurance premium if required)

£

Signed

Date

Please send this completed booking form and cheque to:

Pilgrimage Administrator

Trinity House
4 Chapel Court
Borough High Street London SE1 1HW

Tel: 020 7939 9428

Email: pilgrimage18@southwark.anglican.org

All McCabe flights and flight-inclusive holidays are financially protected by the Civil Aviation authority ATOL scheme. When you pay, you will be supplied with an ATOL Certificate.

McCabe Pilgrimages

11 Hillgate Place

Balham Hill

London SW12 9ER

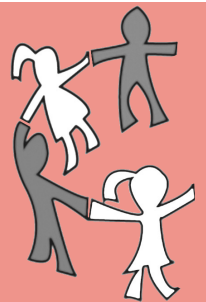
Telephone: 020 8675 6828

Fax: 020 8673 1204

www.mccabe-travel.co.uk



Helping Those in need We encounter On our travels



The McCabe Educational Trust is an independent charity which helps those in need we meet on our travels. In the Holy Land, we support a children's home in Bethany and a school for the blind in Bethlehem. In India we look after fifty boys at a home in Nawabganj.

We invite you to participate in our work.

We will add a £15 **voluntary** donation to your invoice. If you choose to participate, your donation will be **doubled** by a matching contribution from McCabe Pilgrimages. Together, we aim to leave a positive footprint on the paths we travel.

This scheme is entirely voluntary and confidential and you will not be put under any pressure to participate. To opt out simply delete this item from your invoice. Full details of the Trust's work can be found on our website www.mccabe-travel.co.uk